

# 01

## Smart AC Thermostat

Heating and cooling systems are the most costly home appliances in terms of energy consumption all over the world. Moreover, these devices have a direct effect on the comfort of the residents at a smart home. This is highly important due to having a smart control and the optimum consumption. Using smart thermostats, Smart Myer can optimize the energy consumption using control logics or timing schedule. Remote control of the device using your cellphone application let you to control heating/cooling systems while you are out of your smart home. For instance, you can turn on the heating/cooling systems a few minutes before getting home to have good temperature at home. This product has three remote fan relay output up to three amps. Moreover, the relay output of the electric faucet or pump, which will be on when each of fan control relays are one, helps the device to be good for controlling various cooling or heating system. Summer and winter mode setting and wide thermal range are among the other advantages of this product.



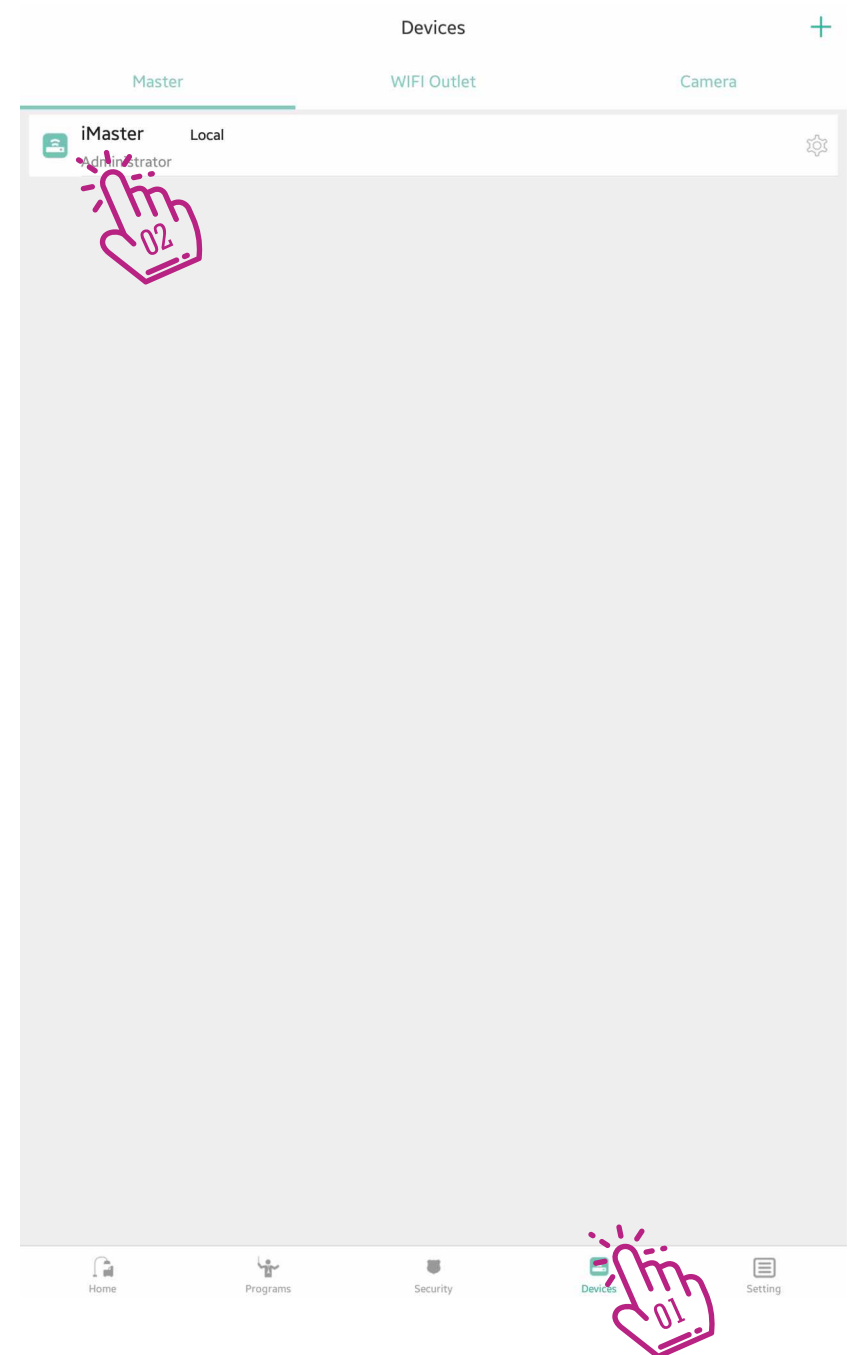
# 02

## Smart AC Thermostat

Go to Device  and click on the Master icon  that is green.

Adding hardware subscriptions to your master must be done when you are connected to the master through the local network.


Clicking on the master will go to the next page where you will see the hardware added to Master.

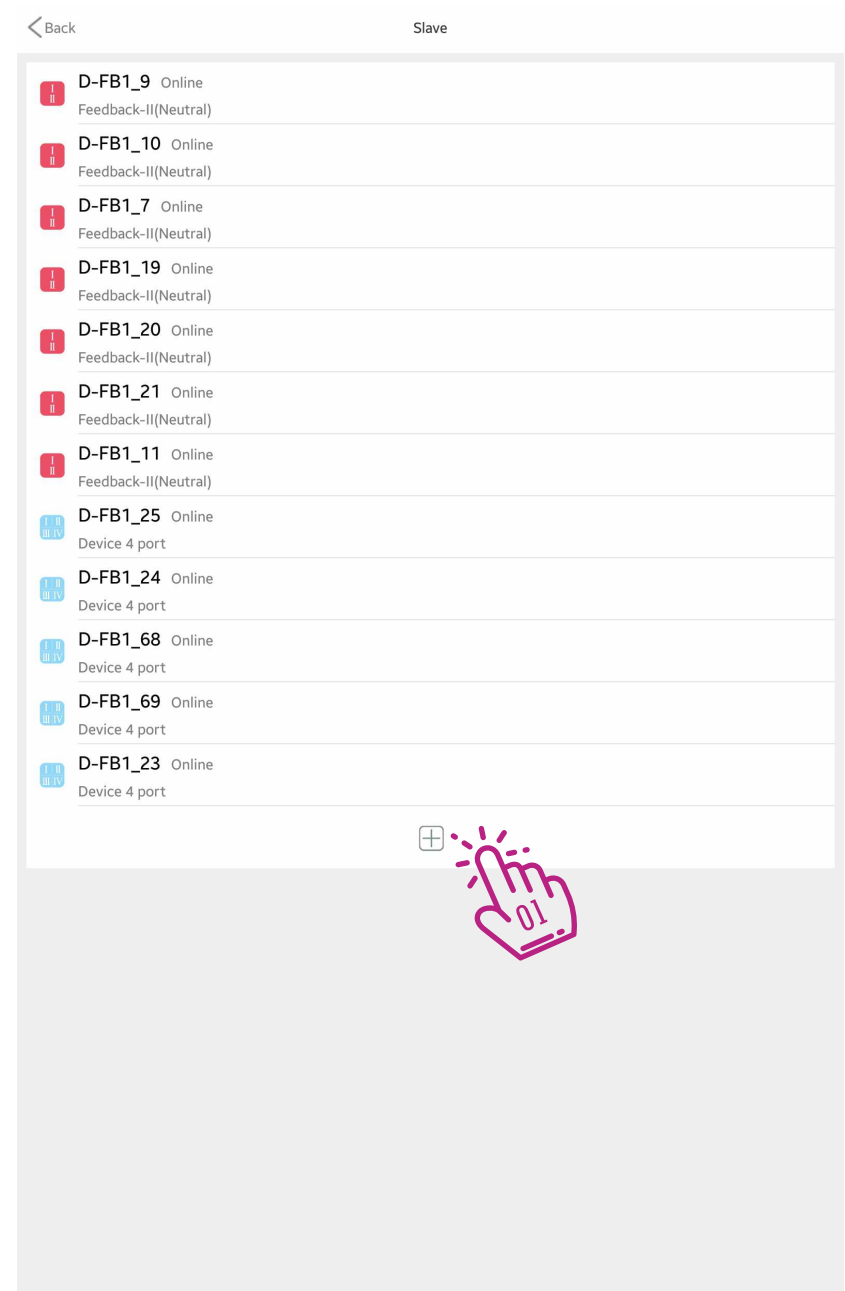


# 03

## Smart AC Thermostat

On this page, you will see the list of all master sub-categories from feedback switches to sensors...

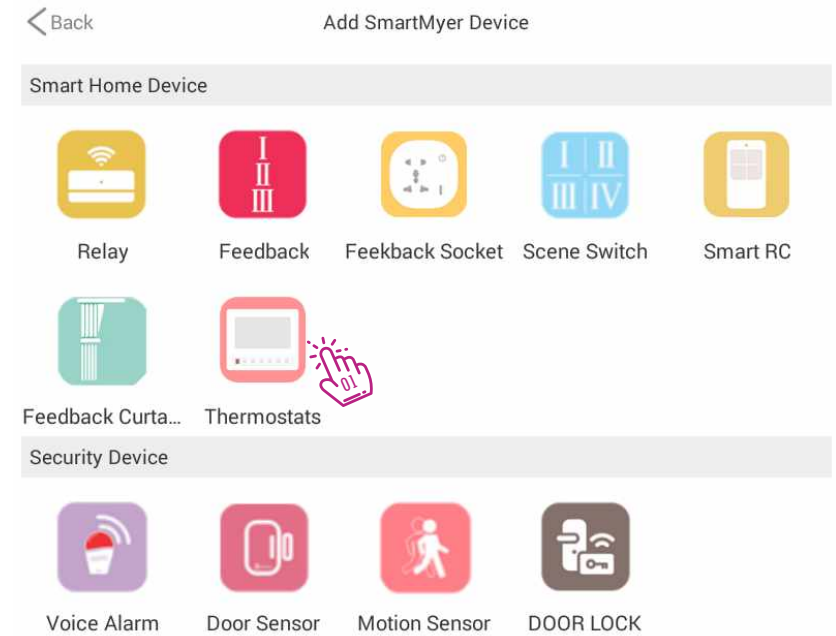
If you have just launched the master, this list is empty and you should add the parts by clicking on the + in the middle of the page. 



# 04

## Smart AC Thermostat

Click the Thermostats icon in the top menu. 



# 05

## Smart AC Thermostat

After you turn on the smart thermostat, you have 16 seconds to press **SCAN** on the screen to add the thermostat to the system.



< Back

Add guide

Long press any button of the Thermostats for 3 seconds until the stopwatch on the panel starts timing, press the scan.



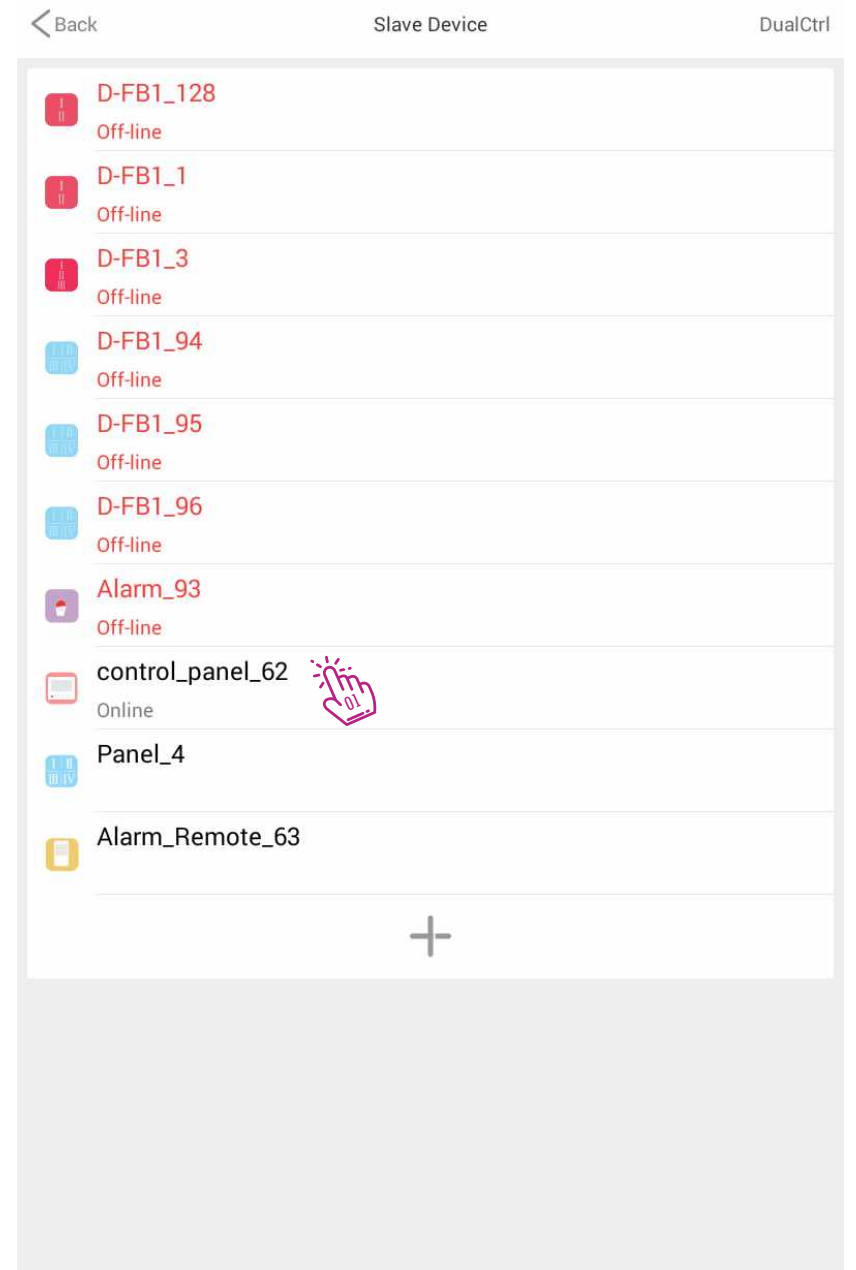
Scan



# 06

## Smart AC Thermostat

Once added to the list, you can click on it and test it on the next page.



# 07

## Smart AC Thermostat

Click on "Switch" to turn on the thermostat



Set the logic of operation for summer or winter by clicking on "Mode"



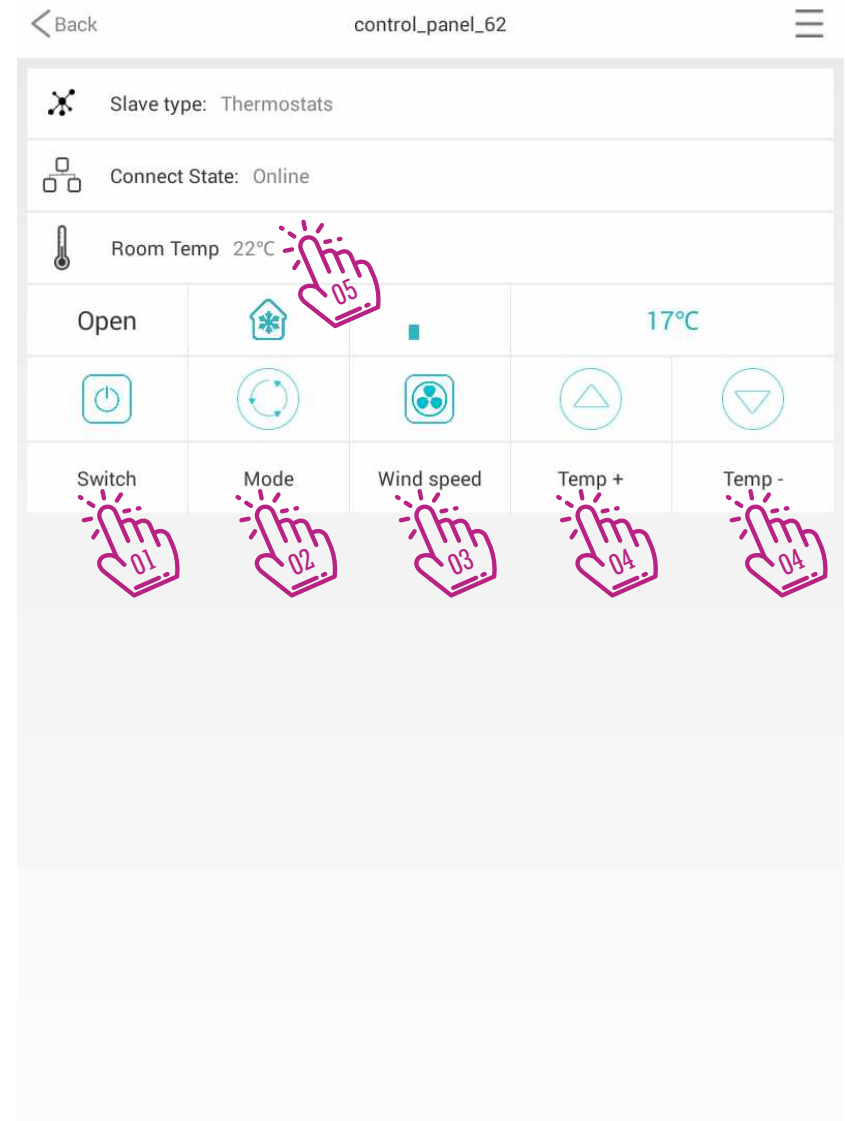
The wind part is related to the setting of "Wind Speed"



Set the desired temperature with "Temp +" and "Temp -"




You can see the room temperature in "Room Temp"




# 08

## Smart AC Thermostat

To add the thermostat to the application's main screens, just click **ADD**  and select the thermostat.

In the list, you will see all the added thermostats. Choose your desired thermostat. 

The thermostat added to the page, by clicking on it, appears in the gray section that displays the most commonly used thermostat keys. 

Click the **More** button  to open the home screen for the thermostat.

On the thermostat's home screen, all control keys are available.

